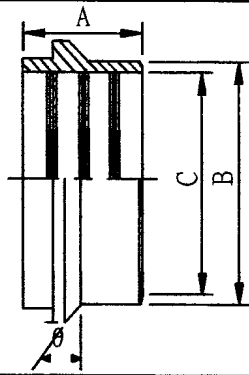
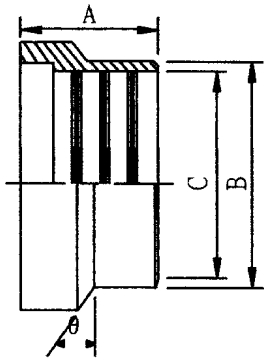


# 14RI



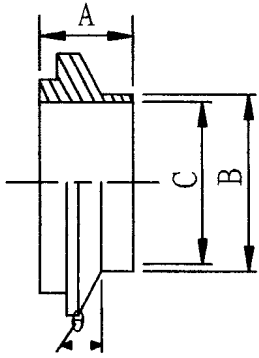
ROLL-ON SIZE	FERRULE			mm
SIZE	A	B	C	$\theta$
1"	25.4	29.5	25.5	37.
1.5"	20.6	42.6	38.2	37.
2"	25.4	55.7	50.9	37.
2.5"	25.4	69.9	63.6	37.
3"	25.4	82.6	76.3	37.
4"	25.4	108	101.7	37.

# 15RI



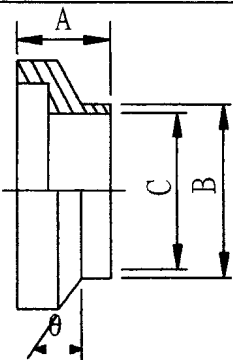
ROLL-ON SIZE	FERRULE			mm
SIZE	A	B	C	$\theta$
1"	26.2	29.5	25.5	37.
1.5"	27	42.6	38.2	37.
2"	33.3	55.7	50.9	37.
2.5"	34.9	69.9	63.6	37.
3"	34.9	82.6	76.3	37.
4"	34.9	108	101.7	37.

# 14WI-5



SCH.5 SIZE	FERRULE			mm
SIZE	A	B	C	$\theta$
1"	19.8	33.5	30.1	37.
1.5"	23.8	48.4	45	37.
2"	28.6	60.5	57	37.
2.5"	29.4	73.2	68.8	37.
3"	33.3	89	84.7	37.
4"	34.1	114.4	110.1	37.

# 15WI-5



SCH.5 SIZE	FERRULE			mm
SIZE	A	B	C	$\theta$
1"	19.8	33.5	30.1	37.
1.5"	23.8	48.4	45	37.
2"	28.6	60.5	57	37.
2.5"	29.4	73.2	68.8	37.
3"	33.3	89	84.7	37.
4"	34.1	114.4	110.1	37.